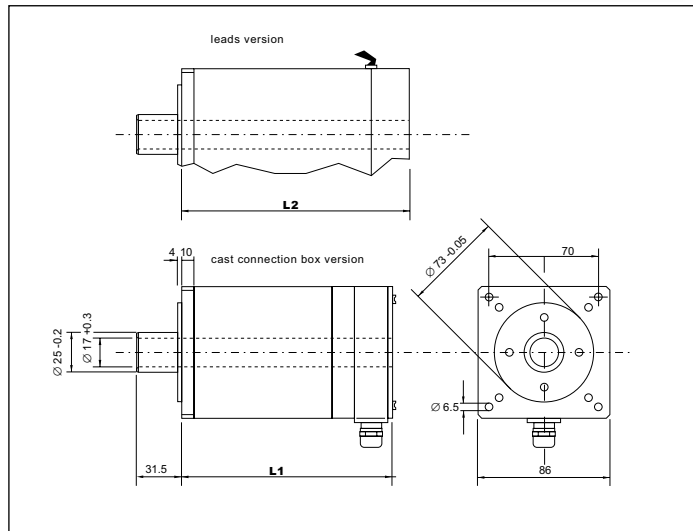


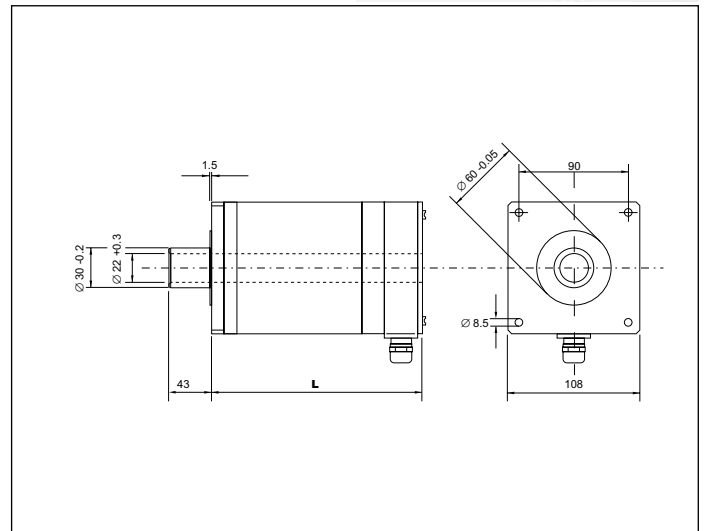
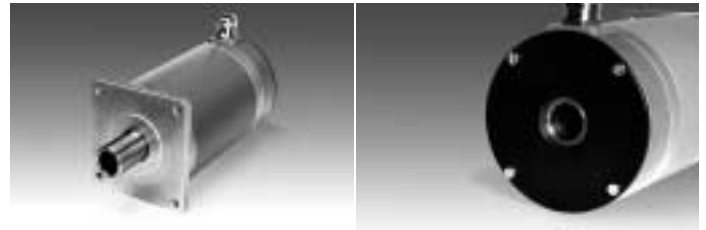
**series SMH 88**



series	type	L1 [mm]	L2 [mm]
<b>SMH 88</b>	SMH 88.1.18M ...	112.5	87
	SMH 88.2.18M ...	144.5	119
	SMH 88.3.18M ...	176.5	151
	SMH 88.4.18M ...	208.5	183

all dimensions in mm

**series SMH 107**



series	type	L±1
<b>SMH 107</b>	SMH 107.1.18M ...	140
	SMH 107.2.18M ...	190
	SMH 107.3.18M ...	240
	SMH 107.4.18M ...	290

all dimensions in mm

**Type key**

**SMH  .  . 18M**

<b>type</b>	<b>88</b>	<b>107</b>							
<b>length (quantity of stacks)</b>	<b>1</b>								
	<b>2</b>								
	<b>3</b>								
	<b>4</b>								
<b>connection</b>									
leads	<b>L</b>								
connector angled	<b>X</b>								
connector straight	<b>Y</b>								
cast connection box (without indication)									
<b>Options</b>									
<b>W</b>	double shaft end								
<b>Z x</b>	customer specific version (No. x will be specified by STÖGRA)								
<b>phase current in A/Ph</b>									
<b>2</b> until <b>12</b>	depending on motor type – see electrical specifications								

examples for ordering key: **SMH 88.2.18ML4**  
**SMH 107.3.18M12**

Electrical and mechanical specifications and max. operating torques for series SMH 88 are identical to series SM 88 (see page 7 and pages 12 to 13). For series SMH 107 the specifications are identical to series SM 107.