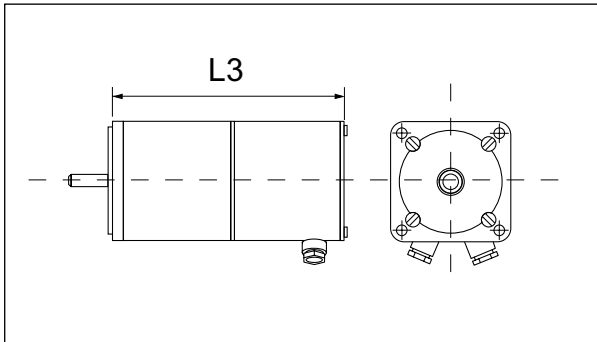


36 stepping motor – equipment

Dimensions stepping motor with gear box, encoder and brake



SM 87.2
with brake



SM 87.3
with encoder H200



SM 87.2
with brake
and encoder H200

total length L3 ±0.5 mm	standard cast connection box	brake	E50	H200/H500	brake and E50	brake and H200/H500
SM 56.1	76	116	88	98	128	137.5
SM 56.2	102	142	114	124	154	163.5
SM 56.3	130	170	142	152	182	191.5
SM 87.1	85.5	131	85.5	104	131	153
SM 87.2	117.5	163	117.5	136	163	185
SM 87.3	149.5	195	149.5	168	195	217
SM 87.4	181.5	227	181.5	200	227	249
SM 88.1	93.5	139	93.5	112	139	161
SM 88.2	125.5	171	125.5	144	171	193
SM 88.3	157.5	203	157.5	176	203	225
SM 88.4	189.5	235	189.5	208	235	257
SM 107.1	111	168	111	136	168	193
SM 107.2	161	218	161	186	218	243
SM 107.3	211	268	211	236	268	293
SM 107.4	261	318	261	286	318	343
SM 168.1	179		179			
SM 168.2	254		254			

SM cable gland



thread	for cable Ø mm	width across flats mm	connections cast connection box	type key
M16 x 1.5	5...9	17	encoder and brake	KV – M16 x 1.5
M20 x 1.5	9...13	22	stepper motor phases	KV – M20 x 1.5

metric EMC cable glands:

- protection type IP68 up to 5 bar
- material brass nickel plated
- for shielded cables
- sealing insert made of neoprene
- O-ring on external thread